

# The Link

May 2019



Dear Friends,

On the Sunday after Easter, and the day after yet another shooting perpetrated by a white supremacist in a place of worship, the congregation was blessed by the presence of Rabbi Brian Mayer. Rabbi Brian has been a friend of the congregation for a couple of years, visiting Bible classes, although this was his first time addressing the congregation. One of the best ways to create the kind of deep interfaith understanding that eradicates

violence is through building friendships, and I am very grateful on behalf of our congregation for this growing friendship.

Rabbi Brian shared with us philosopher Erich Fromm's five aspects of the spiritual life. These aspects are: questions, connections, a decentering of self, hierarchy of values, and transformation.

As we move into the season of Eastertide, I will be looking for signs of these five aspects in my own spiritual life and in the life of our congregation as well. Here are some things I will be trying to notice, and I invite you to pay attention to also.

*continued...*



Worship: Sundays 10 AM  
Office Hours  
Monday thru Thursday: 10 AM—2 PM

Pastor: Rev. Jennifer Garrison Brownell  
jennifer@vanucc.org

Dir. of Membership Exp: Kristina Martin  
kristina@vanucc.org

Office Admin: Elizabeth Spannring  
elizabeth@vanucc.org

[www.vanucc.org](http://www.vanucc.org)

(360) 693-1476

## LETTER FROM OUR PASTOR CONTINUED

Notice what questions are being asked, and who is asking them, and what answers are assumed.

Notice how you and we are connected to the Divine, and how that connection is expressed.

Notice when you (and we!) put others' needs and hopes ahead of our own.

Notice how we both tell and show what is important to us.

And most of all, notice transformation - look for what is changing within you and the congregation that brings you closer to Christ's way.

See you in church!

Blessings,

Jennifer



## MISSION & OUTREACH



### Pride Begins With You Contest

#### **Submissions Due Date Extended to April 30**

The Portland Pride Festival & Parade is June 15 -16 at Tom McCall Waterfront Park. The Conference is registering on behalf of all of our churches and all are invited to march in the parade on June 16. **New this year:** thanks to Randy Franklin, Vancouver UCC member, we will have a parade float this year. To make that happen, we are asking for your ideas for theme and design! We will have a pick-up pulling a small flatbed trailer. This will make the parade accessible to all regardless of ability or age. Youth and grown-ups of all ages are encouraged to imagine a design. Submit your sketches, pictures, ideas to: [jwchair@cpcucc.org](mailto:jwchair@cpcucc.org) by **April 30** but don't delay. Send in your submission today! We will not know our exact line-up spot in the parade until the week before the event, but it will be in the North Park Blocks area again. Please review the parade rules if you will be participating: <https://www.pridenw.org/terms-and-conditions>. We look forward to your help in showing our extravagant UCC welcome to all!

#### **Sign up now for Portland Pride June 15 & 16**

All churches of the Central Pacific Conference are invited to march in the Parade on Sunday, June 16. We also invite you to help staff our booth at the Festival on the 15 and 16.

**Sign up today for our booth.** Here's how it works in 3 easy steps:

- 1) Click this link to see our SignUp on SignUp.com: <https://signup.com/go/MKDCKMh>
- 2) Review the options listed and choose the spot(s) you like. Be sure to save & confirm your sign up spot.
- 3) Sign up! It's Easy - you will NOT need to register an account or keep a password on SignUp.com.

Our presence at the festival means so much to so many who have been harmed by organized religion. Share our UCC Extravagant Welcome and demonstrate that love conquers hate!

If you have any questions, please contact [lk.kulm@gmail.com](mailto:lk.kulm@gmail.com). Start making your Pride plans now!

#### **Cans Help Zambia Students**

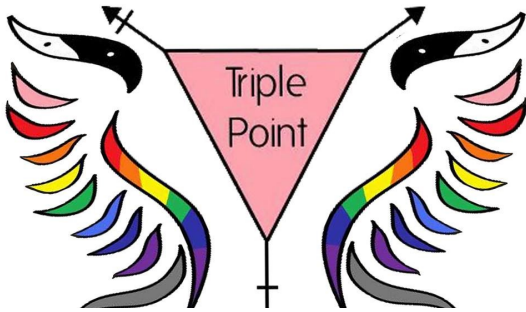
Your cans and bottles make a difference in Zambia because through Good Samaritan Ministries/Zambia the money is used to buy student desks. This is a ministry our church supports. Aluminum cans, water bottles, beer bottles and other bottles are redeemable and the money adds up. Please rinse them, do not crush cans, and give them to Dave Slocum or Nancy Fite at church or take them to Dave's vet office at 808 NE Minnehaha ST, Vancouver, WA 98665. Any questions, call Nancy Fite at 360.696.0380. Thanks!



## MISSION & OUTREACH

### May Special Offering — Triple Point Youth Group

A LIFE CHANGING  
EXQ<sup>U</sup>EERIENCE



Vancouver Triple Point, a program of Children’s Home Society, is Clark County, Washington’s safe haven support group and drop-in program for Lesbian, Gay, Bisexual, Transgender, Intersex, Pansexual, Queer, and Questioning people ages 11 to 18 years old. Triple Point is not only where participants can be proud of their sexual orientation and gender identity, but support others and develop friendships.

Triple Point is a place where participants get to meet supportive peers as well as straight and queer supportive adults, agencies, and community to help remove isolation and barriers of discrimination. Participants are able to develop leadership skills and have access to free mental health services if needed. Triple

Point is located at 1112 Columbia, in downtown Vancouver. To learn more about volunteering, providing dinner/snacks or becoming a member of the Queer Youth Advisory Board: Email [triplepoint@chs-wa.org](mailto:triplepoint@chs-wa.org) or call 360-695-1325 ext 4217. **To donate to this vital organization, simply make your check out to our church and write “Triple Point” in the memo line any Sunday in May.**

## PARISH LIFE



### Sanctuary Flowers

Do you miss having flowers in our sanctuary? We do! If you would like to honor someone, celebrate a special occasion, or just because — you are invited to bring an arrangement for Sunday worship.

Please provide your preferred date, name, and your tribute to the church office so your flowers can be acknowledged in the Sunday bulletin.

Thank you, Jean Beary Stolle - Parish Life Ministry

*Flowers dedicated to my parents in April 2016.*

## OASIS GROUPS—MARY JO EBEL CIRCLE MEETING

Join us for the next meeting on Wednesday, May 15 at 1 pm in Nettie Fries Lounge. Our guest speaker will be Pam Osbourne, talking about her volunteer work with Kaiser Hospice. All women of the church are invited to join us for an informative program and social time. Co-hosted by Judy Walter and Virginia Ebersole.



April's hostess Jo Ann Kersavage



Beverly Crossman and Ruth Hammer



From L to R—Joanie Nelson, Marjorie English, Ellie Bradley, Beverly Crossman, Ruth Hammer, Connie Oppel, Jo Ann Kersavage

## OASIS GROUPS

**The Breakfast Group** meets at 9:30 AM every 2nd Saturday of the month.

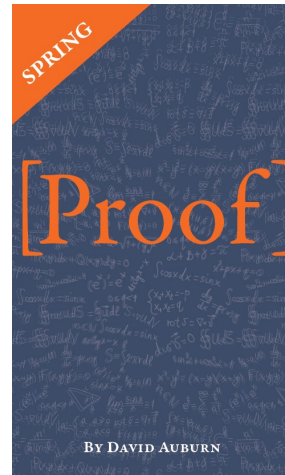


Please join us at the next breakfast on May 11 at the Peachtree Restaurant and Pie House at 6600 NE Hwy 99, Vancouver, WA.

## Prayer Shawl Group



**The Prayer Shawl Group** meets on the second Thursday of each month at 10 am in Clawson Corner. All knitters and crocheters are welcome to join us! Please contact Joanie Nelson for more info.



**The Theater Group** will go to Clark College to see their production of David Auburn's *Proof*, winner of the 2001 Pulitzer Prize on Friday, May 17 at 7:30.

You can buy your tickets online here <https://clarkbookstore.tix.com/>

[Schedule.aspx?OrgNum=4535](https://clarkbookstore.tix.com/Schedule.aspx?OrgNum=4535) .

(Adults \$15; Seniors \$12). Let me know if you're going and if you'd like to go to dinner beforehand. Please contact Pam Osborne for more info.

The plot: On the eve of her twenty-fifth birthday, Catherine, a troubled young woman, has spent years caring for her brilliant but unstable father, a famous mathematician. Now, following his death, she must deal with her own volatile emotions; the arrival of her estranged sister, Claire; and the attentions of Hal, a former student of her father's who hopes to find valuable work in the 103 notebooks that her father left behind.

## Fred Meyer Reward Update

From 01-Jan-201 to 31-March-2019

7 Households donated  
a total of **\$20.76**

If you need help signing up for this program please contact Ken Rowe.  
Please note our new ORGANIZATION NUMBER IS EC214.





*Thank you so much to the entire church family for the amazing service that was put on for Joan. The service was beautiful and we felt so surrounded in love by family and friends!*

*This has been a difficult time for all of us, but we have peace knowing that Joan no longer suffers and she is with our Lord and Savior!*

*Love, Claude, Betsy, Emilee, Norma Lee and families*

## FINANCE NEWS

In February, Council approved the establishment of a \$100,000 line-of-credit with the UCC Cornerstone Fund. We have worked with the Cornerstone Fund since 2008 when they funded skylight and roof repairs to the church; they hold our current mortgage.

We used funds from the line-of-credit to make our final payment to BELFOR Property Restoration for their work in restoring our church building after the May, 2016, arson fire.

Recently Council approved a motion from the Property & Finance ministry to use funds outlined below to pay the entire **\$42,040.58** balance of the line-of-credit. Funds used to pay off the line-of-credit include:

3.25.2500	Rebuilding Fund Balance	<b>\$12,524.22</b>
3.25.5225	Theft Loss (excess funds)	<b>\$703.00</b>
3.25.5245	Sanctuary Entrance Improvements	<b>\$199.30</b>
<u>3.15.0000</u>	<u>Surplus from Operations</u>	<b><u>\$28,614.06</u></b>
	Total line-of-credit balance	<b>\$42,040.58</b>

This leaves **\$10,681.11** in the Surplus from Operations fund as our operating "cushion". In addition, we still have access to the \$100,000 line-of-credit in case of emergencies.

We are fortunate to have had the funds to pay off the line-of-credit in full which leaves us with the mortgage as our only debt. The \$1,500 per month payments on the mortgage are now built into each year's operating budget and no further capital campaigns are anticipated. The mortgage balance is **\$219,761.88**.

Although we are not soliciting contributions, anyone may contribute to paying down the mortgage principal by sending a check with "mortgage" in the memo line. Each month the contributions are sent as a principal-only payment to Cornerstone.

Similarly, anyone may contribute to replenishing the Surplus from Operations fund by sending a check with "line-of-credit" in the memo line.

-- Jeff Osborne, Finance Secretary

## YOUTH NEWS



### Potato Bar and Dessert Auction this Sunday, May 5!

In the last week in July, 9 youth and 2 adults will be traveling on a service trip to Sanctuary One refuge farm in Southern Oregon. You can support this effort with your prayers and by attending the potato bar and dessert auction fundraiser on Sunday, May 5 after church.

## Dessert Auction

Suggested Donations for Potato Bar are \$5 per person, and no more than \$20 per household. Feel free to bring a cake or special baked good for the auction - drop it off in Bradford Hall before worship. And make sure to come ready to bid on all the goodies that will be available. See you then!



## CONGREGATION NEWS

### May 19 is USHER APPRECIATION SUNDAY!

The ushers perform a vital service and are essential to our worship experience. Plan to join us to thank the ushers that day.



And if you are interested in this important service in the life of the church, there will be a gathering after worship that same day.



### Celebration For Christopher Schindler

On Sunday, May 19, we will acknowledge Christopher and his 25 years of providing beautiful music for each worship service. This "party" will take place immediately following our worship service in the sanctuary. You will learn a little bit about him, a plaque will be presented and a "surprise" will happen. Cake will be served and a money tree will be available in the lounge.





## CONGREGATION NEWS

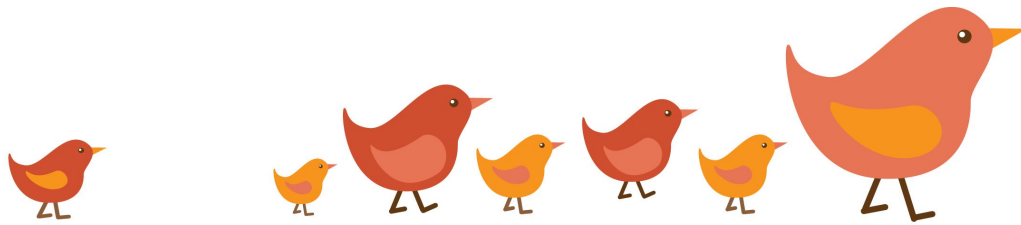


### Chancel Choir Festival—June 2

"Come Fly with Me" and the Chancel Choir as we "Rock Around the Clock," or better yet, rock around the years with hits from the decades of the past and present. I can only "Imagine" "What a



*Wonderful World*" it could be to have an afternoon full of anthems and classics that have shaped the pivotal moments in our lives over time. You are invited to share your music for this end of choir year concert, held at 3 pm on Sunday, June 2, if you have a song you would like to sing solo or in a duet/trio or a piece you would like to play on an instrument of your choice. Don't feel like you are "Under Pressure" but the choir wants to "Rock with You" in a concert that will be followed by a potluck. Sign-ups will be on two clipboards near the front entrance doors at the end of every service until May 19. If you have any further questions, contact the music director, Sterling Roberts at [sterlingroberts2014@gmail.com](mailto:sterlingroberts2014@gmail.com).



# HAPPY MOTHER'S DAY



Dear Church Family,

Sandy and I would like to express our deepest thank yous for the prayers, cards and kind thoughts we have received (and still are) during our adventures with the medical profession. We have a long road of recovery ahead both physically and mentally and we know we'll get there with God and you on our side. We are so incredibly blessed to be a part of such a loving family.

God Bless,

Jerry and Sandy Mathis☺



# May

## BIRTHDAYS

May 1 . . . . . Kristin Martindale  
May 5 . . . . . Isaac Martin  
May 6 . . . . . Janet Melton  
May 7 . . . . . Jim Crossman  
May 7 . . . . . Alona Steinke  
May 13 . . . . . Stephanie Pykonen  
May 16 . . . . . Desi Nelson  
May 19 . . . . . Carole Elizabeth

May 21 . . . . . Laela Brittain  
May 22 . . . . . Jean Matthews  
May 24 . . . . . Gregory Ralph  
May 25 . . . . . Ruby Frank  
May 27 . . . . . Franklin Koffel  
May 29 . . . . . Kathy Woolley  
May 30 . . . . . Beverly Crossman  
May 31 . . . . . Boean Marquardt

### *Special Concerns*

The Family of Joan Blair  
Michelle Esposito  
Steve Hitchens  
Dorothea Johnson

Bob New  
Connie Oppel  
Karen Owen  
Gary Roberts

